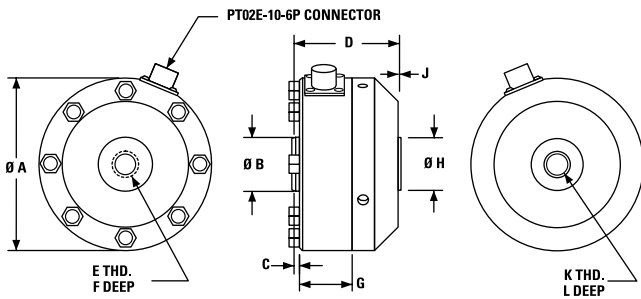


MODEL 3140 SERIES

Tension and compression 500 lbs. to 100K lbs.



Consult factory for specials.

FEATURES :

- 500 lbs. through 100,000 lbs.
- Universal tension and compression loading
- High accuracy
- Low profile
- 150% FS safe overload capability
- Available in single or optional dual bridge configuration
- Metric sizes available

The Model 3140 load cell series has been designed for general-purpose use in demanding applications in automotive, aerospace and military markets. These new tension/compression load cells are direct replacements for other low profile models.

Some advantages of these new load cells are: compact size, high accuracy, low cost and availability.

PERFORMANCE SPECS :

3140 SERIES

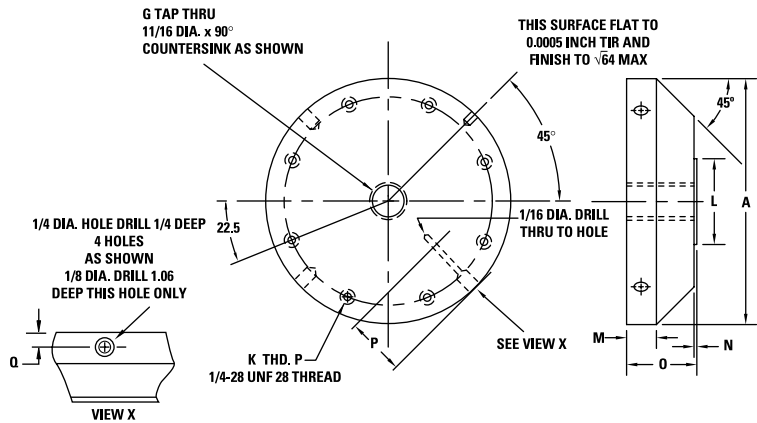
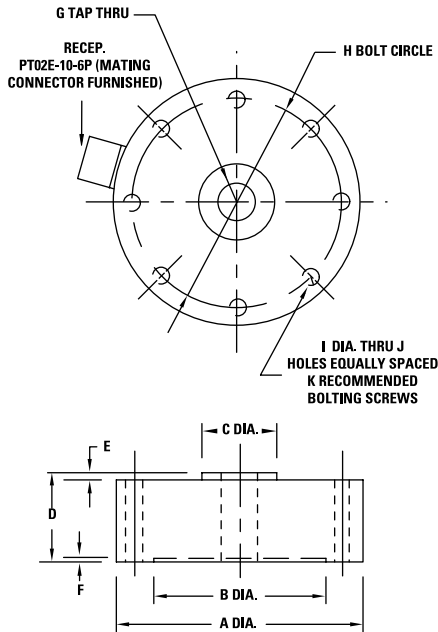
SPECIFICATIONS

Output at rated capacity (500 to 2K) :	2
millivolts per volt, nominal	
Output at rated capacity (5K to 100K) :	4
millivolts per volt, nominal	
Maximum nonlinearity error: of full scale output	± 0.06%
Maximum hysteresis error: of full scale output	± 0.06%
Maximum non-repeatability: of full scale output	± 0.01%
Zero balance: of full scale output	± 1.0%
Input resistance: ohms	350 +40/-3.5
Output resistance: ohms	350 ± 3.5
Temperature range, operating: °F	-65 to +200
Temperature range, compensated: °F	+70 to +170
Temperature effect on output: of rated output per °F	± 0.0015%
Temperature effect on zero: of rated output per °F	± 0.0015%
Static overload capacity: of rated capacity	150%



MODEL NUMBER	CAPACITY lbs. (N)	DIMENSIONS							G English (Metric)	H in. (cm.)	I in. (cm.)	NO. OF HOLES J	BOLTING SCREWS K	DIMENSIONS					
		A in. (cm.)	B in. (cm.)	C in. (cm.)	D in. (cm.)	E in. (cm.)	F in. (cm.)	L in. (cm.)						M in. (cm.)	N in. (cm.)	O in. (cm.)	P in. (cm.)	Q in. (cm.)	
3173	200-3K	4.12	2.85	1.27	1.37	0.12	0.06	5/8-18 UNF-3B	3.50	0.28	8	1/4-28 hexhead	1.25	0.50	0.03	1.13	0.87	0.25	
3173-101	(900-13.5K)	(10.47)	(7.24)	(3.23)	(3.48)	(0.31)	(0.15)	(M16 x 15mm-6H)	(8.89)	(0.71)	8	1/2 inches long	(3.18)	(1.27)	(0.08)	(2.87)	(2.21)	(0.64)	

Tighten to
200 in. lbs.



Tension bases are recommended for all model 3173 applications. When mounting without the tension base, attention must be given to the mating surface with regard to flatness, hardness and stiffness.

SENSOR CHARACTERISTICS : 3173

MODEL NUMBER	NOMINAL LOAD LIMIT CAPACITY F _z		STATIC OVERLOAD CAPACITY % OF NOM. CAPACITY	FATIGUE CAPACITY % OF NOM. CAPACITY	STATIC EXTRANEIOUS LOAD LIMITS			DEFLECTION AT NOM. LOAD LIMIT INCHES	RINGING FREQUENCY H _z
	LBS.	NEWTONS			SHEAR F _x OR F _y LBS.	BENDING M _x OR M _y LB. INCHES	TORQUE M _z LB. INCHES		
3173	200	1K	150	100	4,471	185	3,477	0.003	1,500
	500	2K	150	100	15,625	466	5,208	0.003	2,440
	1K	5K	150	100	15,500	911	7,750	0.003	3,900
	2K	10K	150	100	4,000	2,133	1,523	0.001	5,500
	3K	15K	150	100	5,166	2,818	2,214	0.001	7,200