

FEATURES :

The Model 3415 load cells provide a compact package that more easily integrates into test machines using hydraulic actuators for cyclical load applications such as those involved with vehicle dynamic simulation testing. Mounting threads are designed to attach directly to the actuator. The package size is optimally minimized to the smallest, most lightweight device with the longest possible life capable of measuring the forces inherent in vehicle test applications. These load cells are designed to measure loads in both tensile and compressive modes.

These sensors are machined from a single billet of high-strength steel. These quality sensors are specially designed to deliver an overall accuracy of $\pm 0.15\%$ when considering nonlinearity, hysteresis and repeatability. Standard load capacities are available in a range from 5,000 to 20,000 pounds. The sensors have a nominal bridge resistance of 350 ohms and can be powered by up to 20 volts DC. Nominal output sensitivity is 2 millivolts per volt. Sensors are protected for overloads up to 150% of rated capacity with no damage to the sensor. The sensor designs provide high resistance to side and bending moment loads and are rated to provide over 100 million load cycles in unidirectional loading applications.

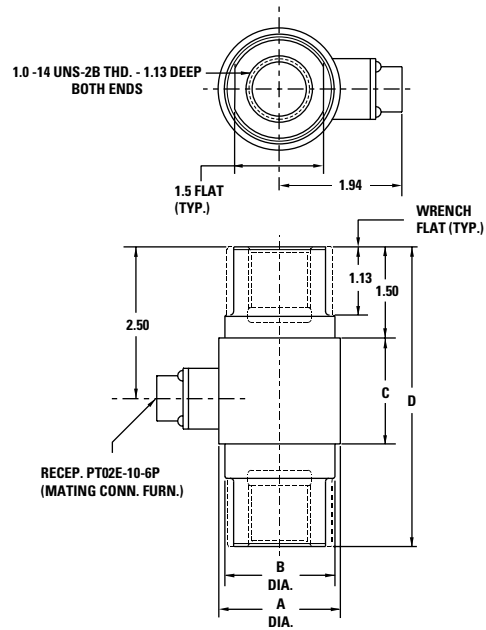
**PERFORMANCE SPECS :
3415**

SPECIFICATIONS

Output at rated capacity: <i>millivolts per volt, nominal</i>	± 2.0
Nonlinearity: <i>of rated output</i>	$\pm 0.10\%$
Hysteresis: <i>of rated output</i>	$\pm 0.10\%$
Repeatability: <i>of rated output</i>	$\pm 0.05\%$
Zero balance: <i>of rated output</i>	$\pm 1.0\%$
Bridge resistance: <i>ohms nominal</i>	350
Temperature range, compensated: °F	+70 to +170
Temperature range, usable: °F	-65 to +200
Temperature effect on output: <i>of reading per °F</i>	$\pm 0.01\%$
Temperature effect on zero: <i>of rated output per °F</i>	$\pm 0.005\%$
Excitation voltage, maximum: <i>volts DC or AC rms</i>	20
Insulation resistance, bridge/case: <i>megohms at 50 VDC</i>	>5,000
Static overload capacity: <i>of full scale</i>	150%

MODEL 3415

Tension and compression 5,000 lbs. to 20,000 lbs.



MODEL NUMBER	A	B	C	D
3415-107-5K	2.00	1.81	1.75	4.94
3415-107-10K	2.00	1.81	1.75	4.94
3415-108-20K	2.38	2.13	2.00	5.19