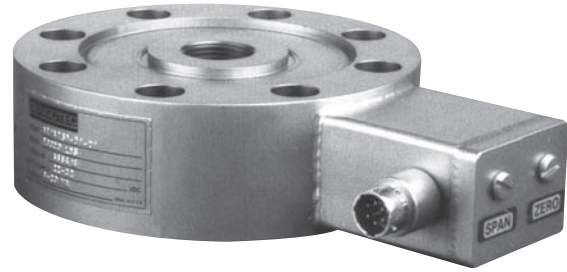


High Output, Pancake Style Tension/Compression Load Cells

Models 41a, 75a



ZERO & SPAN ADJUSTMENTS

WELDED STAINLESS STEEL

Model 41a & Model 75a high output pancake style load cells have the same features as the Models 41 & 75 Tension & compression Cells with hermetically sealed, all welded stainless steel construction and high resistance to side loads. The added feature of an internal amplifier for voltage or current output reduces the effects of signal noise, and eliminates the need in most cases for a signal conditioning card in ones data acquisition system. Options include an internal buffered shunt calibration circuit for ease of set-up with an associated indicator, and the removal of zero & span adjustments.

PERFORMANCE

	Model 41a Order Code AL141	Model 75a Order Code BL175
Ranges	0-50 to 50,000 lb.*	0-50 to 20,000 lb.
Accuracy		
Non-linearity	±0.1% F.S.	±0.1% F.S.
Hysteresis	±0.08% F.S.	±0.1% F.S.
Non-repeatability	±0.03% F.S.	±0.03% F.S.
Outputs	See below	

ENVIRONMENTAL

Operating Temperature Range	0°F to 185°F	0°F to 185°F
Compensated Temperature Range	60°F to 160°F	60°F to 160°F
Temperature Effects on Zero and Span	±0.005% F.S./°F	±0.005% F.S./°F

ELECTRICAL

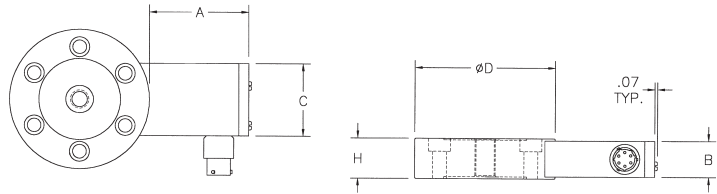
Electrical Termination	PTIH-10-6P Welded Stainless Hermetic Connector Mating Connector Order Code AA111	
------------------------------	--	--

MECHANICAL

Life Cycles (approx)	10 ⁷ fully reversed	10 ⁹ fully reversed
Operation	Tension/Compression	Tension/Compression
Casing Material	Welded Stainless Steel	Welded Stainless Steel

Notes * Special ranges available from 5 to 500,000 lb.
Standard calibration for tension/compression load cells is in tension only.

Dimensions (inches)



Model 41a
(Order Code AL141)
Precision

Model 75a
(Order Code BL175)
Fatigue Rated

Available Ranges	Available Ranges	Dia.	Ht.	Mtg. Hole ID	Center Thread	A"	B"	C"
50; 100; 250; 500; 1000 lb.	50; 100; 250; 500 lb.	3.00	1.00	0.28"	3/8-24UNF	2.5	0.9	1.8
2000; 3000; 4000; 5000 lb.	1000; 2000 lb.	3.50	1.00	0.34"	1/2-20UNF	2.5	0.9	1.8
7500; 10,000; 15,000 lb.	3000; 4000; 5000; 7500 lb.	5.50	1.80	0.40"	1-14UNS	2.3	1.5	2.0
20,000; 30,000; 50,000 lb.	10,000; 15,000; 20,000 lb.	6.00	1.80	0.53"	1-1/2-12UNF	2.3	1.5	2.0

**Specify Output:
Output/Options**

See pages AP-6 & 7 for details

Voltage/Option
0 ± 5 Vdc/2c
0 ± 10Vdc/2t

Current/Option
4-20mA/2k (2 wire)
4-20mA/2j (3 wire)

Enhancement Options

Remote Shunt calibration/3d