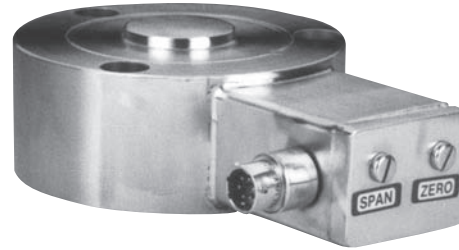


High Output Pancake Style Compression Load Cells

Models 43a, 73a

WELDED STAINLESS STEEL

ZERO & SPAN ADJUSTMENTS



Model 43a & Model 73a high output compression type load cells include all the features of the Models 43 & 73 plus the option of either voltage or current output. These load cells are of all welded stainless steel construction with hermetic welded-on electrical connectors. The high level ± 5 , 10 Vdc or 4-20mA outputs are standard with zero and span adjustments with gasketed cap screw covers. Options include an internal buffered shunt calibration circuit for ease of set-up with an associated indicator, and the removal of zero & span adjustments for tamper free installations, and a variety of electrical terminations.

PERFORMANCE

	Model 43a Order Code AL143	Model 73a Order Code BL173
Ranges*	0-50 to 0-200,000 lb.	0-50 to 0-100,000 lb.
Accuracy		
Non-linearity	$\pm 0.1\%$ F.S.	$\pm 0.1\%$ F.S.
Hysteresis	$\pm 0.08\%$ F.S.	$\pm 0.1\%$ F.S.
Non-repeatability	$\pm 0.03\%$ F.S.	$\pm 0.03\%$ F.S.
Outputs	See Below	

ENVIRONMENTAL

Compensated Temperature Range	60°F to 160°F
Operating Temperature Range	0°F to 185°F
Temperature Effects on Zero & Span	$\pm 0.005\%$ F.S./°F

ELECTRICAL

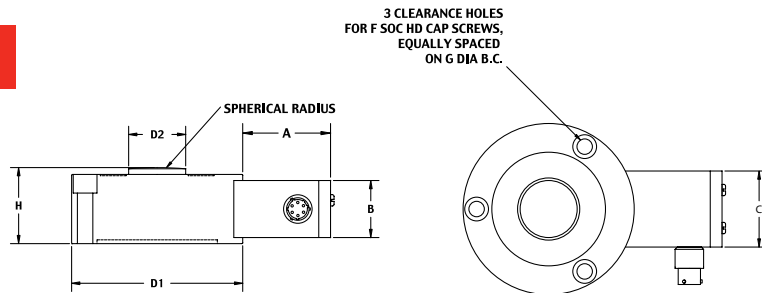
Electrical Termination	PTIH-10-6P or equiv. (Hermetic stainless) Mating Connector Order Code AA111
------------------------------	--

MECHANICAL

Operation	10°, Unidirectional	10°, Unidirectional
Case Material	Welded Stainless Steel	Welded Stainless Steel

*Special Ranges available from 5 to 500,000 lb. Contact Sensotec sales for details.

Dimensions



Model 43a
Precision

Model 73a
Fatigue Rated

Available Ranges(lb.)	Available Ranges(lb.)	D1"	D2"	H"	F"	G"	A"	B"	C"
50; 100; 250; 500;1000	50; 100; 250; 500;	3.00*	0.56	1.18	1/4	2.250	2.5	0.9	1.8
2000; 3000; 4000; 5000	1000; 2000	3.50	0.69	1.18	5/16	2.625	2.5	0.9	1.8
7500; 10,000; 15,000	3000; 4000; 5000	4.50	1.50	2.00	3/8	3.790	2.3	1.5	2.0
20,000; 30,000; 50,000	7500; 10,000; 15,000	4.50	1.50	2.00	3/8	3.790	2.3	1.5	2.0
75,000; 100,000	20,000; 30,000; 50,000	4.50	1.50	2.00	3/8	3.790	2.3	1.5	2.0
150,000; 200,000	75,000; 100,000	5.50	2.00	2.18	3/8	4.812	2.3	1.5	2.0

* 3.00 cell has six mounting holes.

Specify Output:
Output/Options

See pages AP-6 & 7 for details

Voltage/Option
0 \pm 5 Vdc/2c
0 \pm 10Vdc/2t

Current/Option
4-20mA/2k (2 wire)
4-20mA/2j (3 wire)

Enhancement Options

Remote Shunt calibration/3d

1-888-282-9891

Honeywell
Sensotec Sensors

www.honeywell.com/sensing