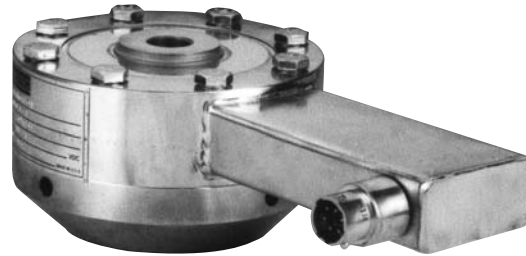


High Output Ultra Precision & Fatigue Rated Load Cells

Models 45a, 47a



ZERO & SPAN ADJUSTMENTS

TENSION & COMPRESSION

PERFORMANCE

ENVIRONMENTAL

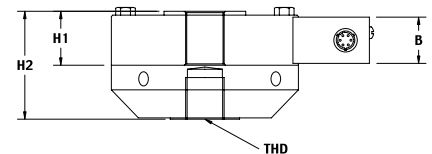
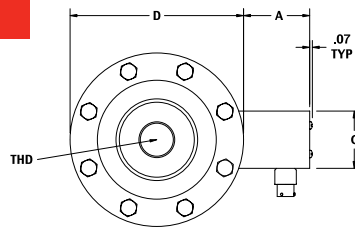
ELECTRICAL

MECHANICAL

Model 45a & Model 47a high output ultra precision & fatigue rated load cells include all the features and the industry common dimensions of the Model 45 & Model 47 plus a high level voltage or current output. The high level output reduces the effects of signal noise, and in most cases, eliminates the need for an additional signal conditioning card in ones data acquisition system. Options include certifications for use in hazardous areas, an internal buffered shunt calibration circuit for ease of setup with an associated indicator, and the removal of zero & span adjustments. The standard calibration is in tension, and optional data is available for both tension and compression.

	Model 45a Order Code AL145	Model 47a Order Code AL147
Ranges	0-250 to 0 to 100,000 lb.	0-250 to 0-100,000 lb.
Accuracy (Static Error Band).....	±0.04% F.S. to ±0.06% F.S.	±0.02% F.S. to ±0.05% F.S.
Output Options	See Below (calibrated in tension)	See Below (calibrated in tension)
Operating Temperature Range	0°F to 185°F	30°F to 130°F
Compensated Temperature Range	30°F to 130°F	±0.005%F.S./°F
Temperature Effects on Zero & Span		
Electrical Termination.....	PT1H-10-6P welded stainless steel hermetic connector Mating Connector Order Code AA111	
Operation.....	Tension/Compression (calibrated in tension)	
Life Cycles (approximately)	One Billion, Fully Reversed	
Case Material	Welded Stainless Steel	

Dimensions (inches)



Model 45a Fatigue Rated (Order Code AL145)

Range	D."	H1"	Center Thread
250; 500; 1,000; 2,500; 5,000; lb.	4.12	1.37	5/8-18 UNF-3B
10,000; 25,000 lb.	6.06	1.75	1-1/4-12 UNF-3B
50,000 lb.	8.00	2.50	1-3/4-12 UNF-3B
100,000 lb.	11.00	3.50	2-3/4-8 UNF-3B

Clearance Holes for Mounting
9/32 Dia., 8 Holes Eq. Sp., 3.50 B.C.
13/32 Dia., 12 Holes Eq. Sp., 5.125 B.C.
17/32 Dia., 16 Holes Eq. Sp., 6.50 B.C.
11/16 Dia., 16 Holes Eq. Sp., 9.00 B.C.

Model 47a Ultra Precision Fatigue Rated (Order Code AL147) Includes Factory Installed Base Plate

Range	D."	H2"	Center Thread
250; 500; 1,000; 2,500; 5,000 lb.	4.12	2.5	5/8-18 UNF-3B
10,000; 25,000 lb.	6.06	3.5	1-1/4-12 UNF-3B
50,000 lb.	8.00	4.5	1-3/4-12 UNF-3B
100,000 lb.	11.00	6.5	2-3/4-8 UNF-3B

Specify Output:

Output/Options	Voltage/Option	Current/Option	Enhancement Options
See pages AP-6 & 7 for details	0 ± 5 Vdc/2c	4-20mA/2k (2 wire)	Remote Shunt calibration/3d
	0 ± 10Vdc/2t	4-20mA/2j (3 wire)	

NOTE:Standard calibration for tension/compression load cells is in tension only. Do not remove pull plate.

LOAD

ULTRA PRECISION & FATIGUE RATED