

Contrast scanner KT 2

Adjustable scanning distance

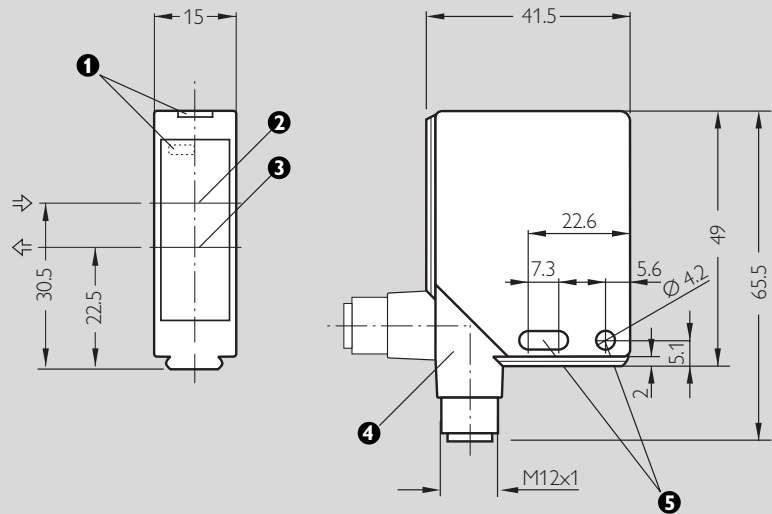
13.5 mm



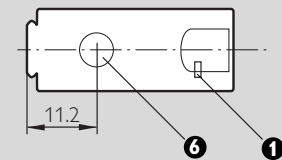
Features:

- LED light source (green)
- Adjustable sensitivity
- Immune to ambient light sources (HF lamps, warning flash lights)
- Light- or dark-switching selectable via control wire
- Switching frequency 1.5/s
- NPN and PNP supply connections
- All-round reverse-polarity protection at the inputs and outputs
- Outputs short-circuit protected
- 90° rotatable M12 equipment plug
- CE

KT 2G-2 B3711

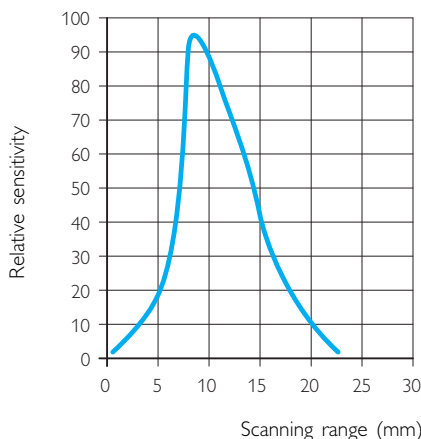
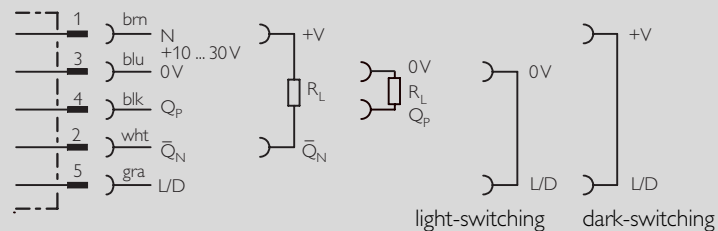


- 1 LED signal strength indicator
- 2 Optical axis – receiver
- 3 Optical axis – sender
- 4 M12 plug (rotatable by 90°)
- 5 Mounting hole \varnothing 4.2 mm
- 6 Sensitivity control



Connection diagram

KT 2G-2 B3711



gra	brn	blu	blk	wht
gray	brown	blue	black	white

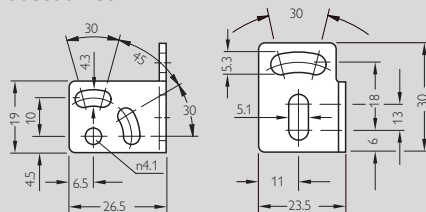
Contrast Scanner

KT 2

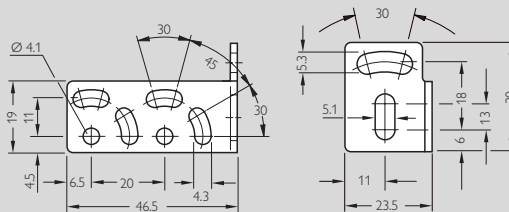
Type	KT 2G	-2 B371 I
Order no.		1 016 112
Scanning range, adjustable ¹⁾		13.5 mm
Scanning range – tolerance		± 1.5 mm
Supply voltage V_s		10 to 30 V DC (limiting values)
Current consumption (without load)		≤ 30 mA
Ripple ²⁾		≤ 5 V _{pp}
Light source		LED, average service life 100 000 h ³⁾
Light spot diameter		2 mm
Light wave length		520 nm (green)
Transistor outputs Q_p and Q_N		Output Q_p - PNP Output Q_N - NPN
Signal voltage HIGH		$V_s - 2.9$ V V_s
Signal voltage LOW ⁴⁾		approx. 0 V ≤ 1.5 V
Output current I_A max.		100 mA
Operating mode		dark- or light-switching, selectable via control wire L/D
Control wire L/D		0 V or unswitched ⇒ light-switching
Control wire L/D		V_s ⇒ dark-switching
Response time ^{5)/switching frequency ⁶⁾}		≤ 300 μs; 1500/s
VDE protection class ⁷⁾		II
Enclosure rating		IP 67
Circuit protection ⁸⁾		A, B, C
Ambient operating temperature ⁹⁾		- 25 to + 60 °C
Storage temperature ⁹⁾		- 25 to + 75 °C
Weight		with plug approx. 120 g

- 1) Object with 90 % reflectance (with relation to standard white according to DIN 5033)
 2) Must be within V_s tolerances
 3) At $T_u = +25$ °C
 4) At $0T_u = +25$ °C and output current of 100 mA
 5) Signal operating time with resistive load
 6) With light/dark ratio 1 : 1
 7) Withstand voltage
 8) A = supply connection reverse-polarity protected
 B = outputs short-circuit protected
 C = Interference suppression
 9) Do not distort cable below 0 °C

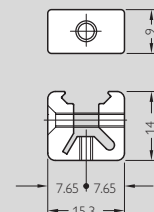
Accessories



Small mounting bracket for series KT 2
(Order no. 2 012 938)



Large mounting bracket for series KT 2
(Order no. 2 013 942)



Terminal clamp for series KT 2
(2 pieces required)
(Order no. 2 013 285)
 Double terminal clamp
(Order no. 2 013 947)



Great Britain
 Erwin Sick
 Optic-Electronic Ltd.
 Waldkirch House
 39 Hedley Road, St. Albans
 Hertfordshire AL1 5BN
 Phone +44 17 27-83 11 21
 Fax +44 17 27-85 67 67

USA
 SICK Optic-Electronic, Inc.
 6900 West 110th Street
 Bloomington, MN 55438
 Phone +1 612 941-67 80
 Fax +1 612 941-92 87
 WATS: 1-800-325-7425

Australia
 Erwin Sick Optic-Electronic
 Pty. Ltd. Head Office, P.O. Box 214
 899 Heidelberg Road
 Ivanhoe, Vic. 3079
 Australia
 Phone +61 39 49 74 10 0
 (0 08) 33 48 02 - toll free
 Fax +61 39 49 71 18 7