

AC-AC Ultra Precision LVDTs

Models PLVX AND S5

0.25% NON-LINEARITY

NON-ROTATING PROBE

STAINLESS STEEL

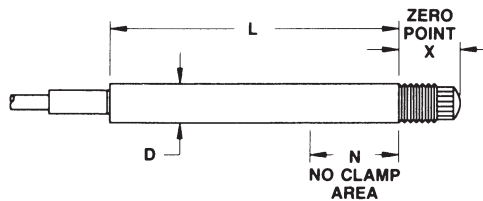


SENSOTEC's Models PLVX and S5 Ultra Precision LVDTs are designed for single and multi-point industrial gaging applications and micro-displacement measurements in research and scientific studies. Both models incorporate non-rotating armatures to increase resistance to side loads and improve repeatability. Bodies and probes are stainless steel constructed and windings are magnetically shielded. Ultra Precision LVDTs utilize spring loaded captive guided armatures and low friction, non-rotating probes. Non-linearity is 0.25% full scale. The Model PLVX with a 0.02" stroke range has a mechanical zero adjustment to correct pre- and over-travel.

Dimensions

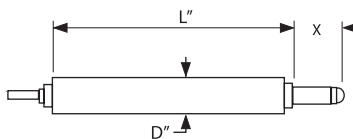
Model PLVX

Order Code W/Range	Available Stroke Ranges	Output Sensitivity mv/v/0.001"	L"	N"	D"	X"	Approx. Unit Wt. (oz.)
AY111HI	+/-0.02"	6	1.02	0.22	0.31	0.30	0.45
AY111HK	+/-0.04"	4	2.09	0.55	0.31	0.55	0.56
AY111HM	+/-0.1"	4	2.24	0.71	0.31	0.79	0.63
AY111HN	+/-0.2"	3	*	1.18	0.31	0.87	0.78

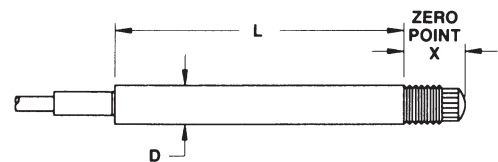


Model S5

Order Code W/Range	Available Stroke Ranges	Output (Nom) Sensitivity mV/V/0.001"	L"	D"	X"	Approx. Unit Wt. (grams)
AY112HH	+/-0.01"	37	1.89	0.31	0.43	14
AY112HI	+/-0.02"	75	1.89	0.31	0.43	14
AY112HK	+/-0.04"	150	2.01	0.31	0.51	18
AY112HM	+/-0.1"	375	2.40	0.37	0.45	22
AY112HN	+/-0.2"	700	*	0.37	0.45	26
AY112HF	+/-0.3"	420	3.46	0.37	0.60	30
AY112HG	+/-0.4"	580	3.90	0.37	0.75	34
AY112HP	+/-0.5"	780	4.76	0.37	0.85	42



Model S5
0.1" to 0.5"



Model S5
0.01" to
0.04"

* Consult factory

	Model PLVX Order Code AY111	Model S5 Order Code AY112	
PERFORMANCE	Stroke Ranges..... Non-linearity (max)..... Non-repeatability (max)..... Output Sensitivity..... Resolution..... Phase Shift.....	+ /-.02" to .2" + /-0.25% F.S. 6 microinches See dimension table Infinite <10° @ 5KHz	+ /-.01" to .5" + /-.25% F.S. <20 microinches See dimension table Infinite <10° @ 5KHz
ENVIRONMENTAL	Temperature, Operating..... Temperature Effect..... - Zero (max)..... - Span (max).....	-40° F to 212° F .005% F.S./° F .005% F.S./° F	-4° F to 257° F .006% F.S./° F .006% F.S./° F
ELECTRICAL	Element Type..... Input Supply (calibrated)..... Input Supply (acceptable)..... Output Load (min.)..... Wiring Code (std)..... Electrical Termination.....	AC-AC LVDT 5V RMS @ 5KHz 1-7V RMS @ 2-10KHz 100k ohms #30 (See Pg. AP-8) Multiconductor shielded cable	AC-AC LVDT 5V RMS @ 5KHz 1-7V RMS @ 2-10KHz 100k ohms #30 (See Pg. AP-8) Multiconductor shielded cable
MECHANICAL	Case Material..... Probe Material..... Armature Type..... Unit Weight..... Spring Force (max).....	Stainless steel Stainless steel Captive guided spring return See dimension table 3.5 oz. (.02") 3.56 oz. (.04") 4.16 oz. (.1") 5.29 oz. (.2")	Stainless steel Stainless steel Captive guided spring return See dimension table 7.5 oz. (.01", .02", .04") 4.23 oz. (.1") 4.58 oz. (.2") 8.64 oz. (.3") 7.40 oz. (.4") 7.58 oz. (.5")

General Information

How to order (See Pg. AP-19)
LVDT selection flow chart (See Pg. LV-1)
Consult factory for pneumatic (air push) option