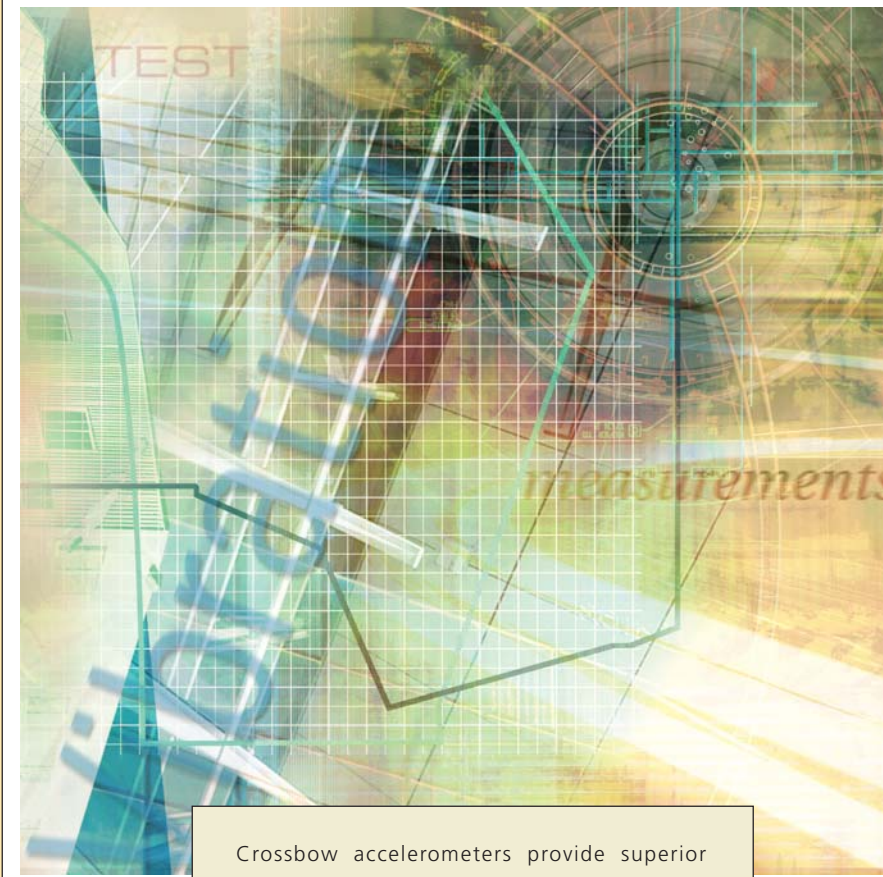


# ACCELEROMETERS



accelerometers

Crossbow accelerometers provide superior performance in small packages. Based on our expertise in MEMS (Micro-Electro-Mechanical Systems) and DSP (Digital Signal Processing) technology, Crossbow accelerometers deliver reliable, cost-effective solutions across a wide range of applications. We offer several different accelerometers, each optimized to meet customer needs in targeted fields.

- LP Series - General Purpose
- LF Series - Modal Analysis
- HF Series - Vibration and Shock



## LP SERIES

### GENERAL PURPOSE

The LP Series is a family of low-power, general purpose accelerometers available in ranges of  $\pm 4g$ ,  $\pm 10g$ ,  $\pm 25g$ ,  $\pm 50g$ , and  $\pm 100g$ . Common applications include vibration analysis, automotive testing, instrumentation, and equipment monitoring.



## LF SERIES

### HIGH SENSITIVITY

The LF Series single and three-axis accelerometers are precision,  $\pm 1g$  and  $\pm 2g$  acceleration sensors. Common applications include seismic vibration, precision tilt/sway, and orientation measurements.



## HF SERIES

### VIBRATION AND SHOCK MEASUREMENTS

The HF Series accelerometers are precision vibration sensors based on an advanced piezoelectric material integrated with signal conditioning (charge amp) and current regulation electronics. The sensor features low noise, 300  $\mu g$ ms and wide bandwidth, 0.3-10,000 Hz. These sensors are compatible with voltage mode operation.

See Next Page for More...

## ACCESSORIES



### AD128 DATA LOGGER & AD200 READYDAQ

A complete stand-alone data acquisition system including a pocket-sized logging unit, configuration and analysis software and all accessories. This system provides a method for logging data directly from Crossbow accelerometers.

## ACCESSORIES

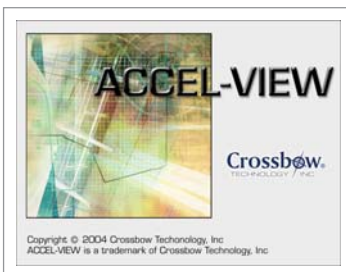


### CXLDK DATA ACQUISITION

An easy-to-use accelerometer development system that provides a simple way to interface to any crossbow accelerometer with a PC, laptop, or any other CS-232 enabled hardware. The CXLDK data acquisition includes ACCEL-VIEW graphical software for immediate evaluation of data in vibration, acceleration, and tilt sensing applications.

## ACCEL-VIEW

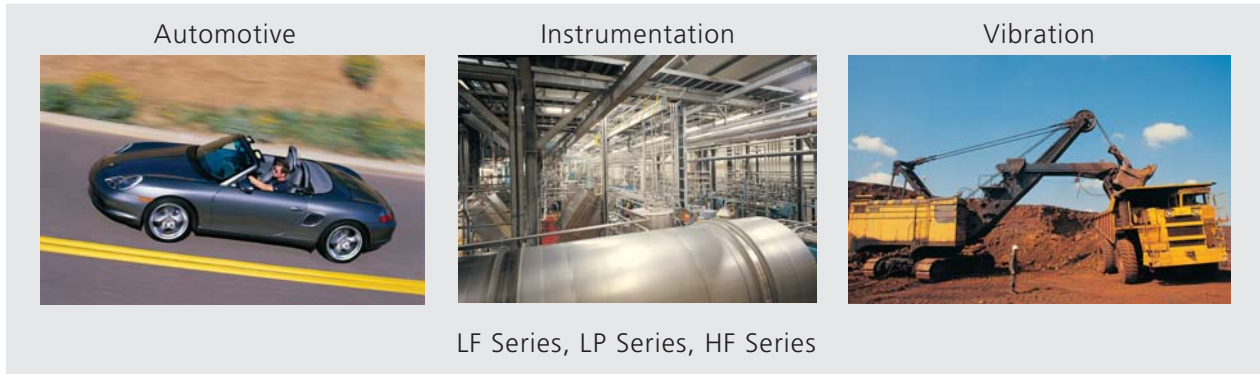
### EVALUATION SOFTWARE



Crossbow's ACCEL-VIEW software is designed for PCs running Microsoft Windows. ACCEL-VIEW provides a convenient way to start system development, evaluate performance, and perform data acquisition using accelerometers or tilt sensors. It is available free of charge and can be downloaded from our web site, [www.xbow.com](http://www.xbow.com).

# Accelerometers

## PRODUCT GUIDE



accelerometers

Part Number	Axes	Span (g)	Sensitivity (mV/g)	Bandwidth [Fc(Hz)=-3dB]	Noise (mg rms)
<b>General Purpose</b>					
CXL04LP1	X	± 4	500	DC-100	10
CXL04LP1Z	Z	± 4	500	DC-100	10
CXL04LP3	TRI	± 4	500	DC-100	10
CXL10LP1	X	± 10	200	DC-100	10
CXL10LP1Z	Z	± 10	200	DC-100	10
CXL10LP3	TRI	± 10	200	DC-100	10
CXL25LP1	X	± 25	80	DC-100	10
CXL25LP1Z	Z	± 25	80	DC-100	10
CXL25LP3	TRI	± 25	80	DC-100	10
CXL50LP1	X	± 50	40	DC-100	50
CXL50LP1Z	Z	± 50	40	DC-100	50
CXL50LP3	TRI	± 50	40	DC-100	50
CXL100LP1Z	Z	± 100	20	DC-100	80
Options					
-R Voltage Regulator, 8-30 Vdc input					
-AL High Temperature Package					
<b>High Sensitivity</b>					
CXL01LF1	X	± 1	2,000	DC-50	0.5
CXL01LF3	TRI	± 1	2,000	DC-50	0.5
CXL02LF1	X	± 2	1,000	DC-50	1.0
CXL02LF1Z	Z	± 2	1,000	DC-50	1.0
CXL02LF3	TRI	± 2	1,000	DC-50	1.0
Options					
-R Voltage Regulator, 6-30 Vdc input					
-AL High Temperature Package					
<b>Vibration and Shock</b>					
CXL10HF1Z	Z	± 10	100	0.3 - 10,000*	0.3
CXL10HF3	TRI	± 10	100	0.3 - 10,000*	0.3
CXL100HF1Z	Z	± 100	10	0.3 - 10,000*	0.3
CXL100HF3	TRI	± 100	10	0.3 - 10,000*	0.3
Options					
-AL High Temperature Package					
*Mounting and package dependent					