

Demonstration Systems

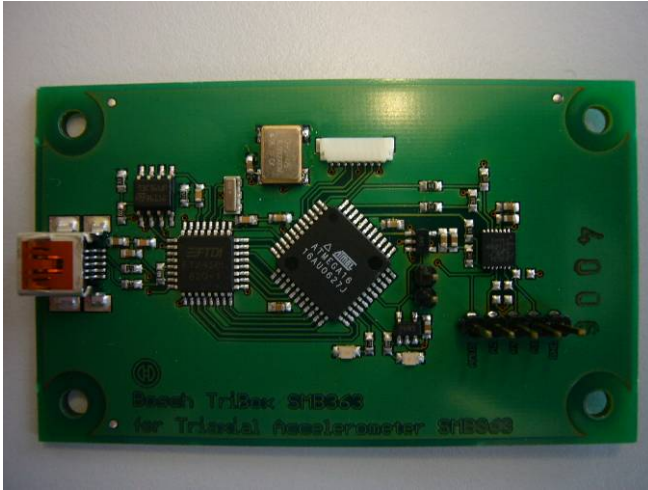


Scope of Demonstration Boards

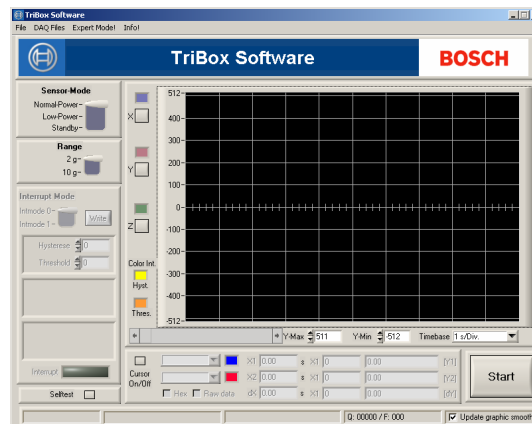
- Platform for basic sensor operation
- Functional demonstration of sensor
- Data logging of measured values
- PC Software TriBox and Sensor Desktop allows easy access to basic sensor functionality



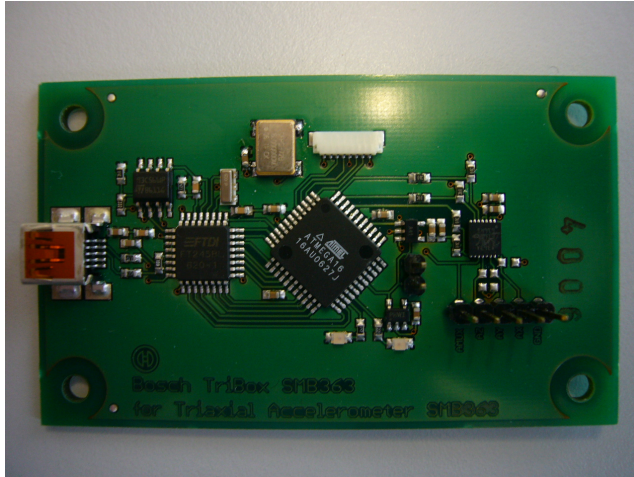
Tribox363



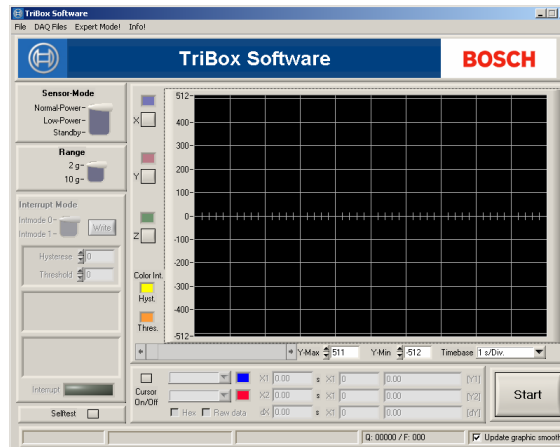
- Demonstrator for SMB363
- Status: available
- USB connectivity
- PC Suite: Tribox
- Features:
 - Analogue voltage output for each axis and multiplexer pin
 - Measure of current consumption
 - Read-out and display acceleration values
 - Data logging on PC



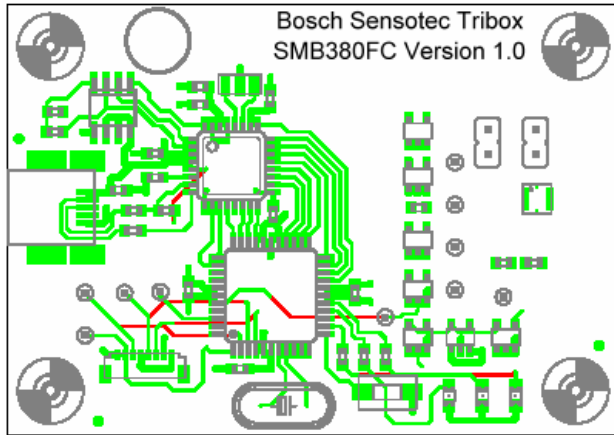
Tribox365



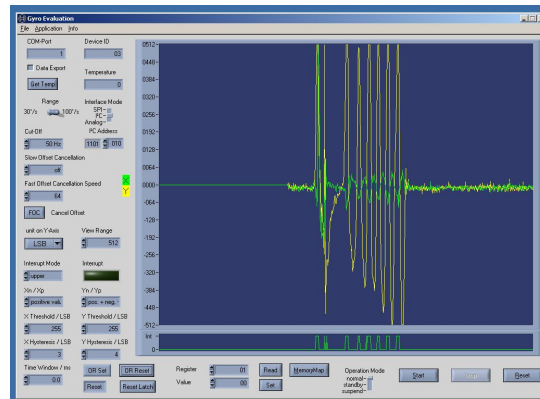
- Demonstrator for SMB365
- Status: available
- USB connectivity
- PC Suite: Tribox
- Features:
 - Read-out and display acceleration values
 - Data logging on PC
 - Configure and display of on-chip interrupt function



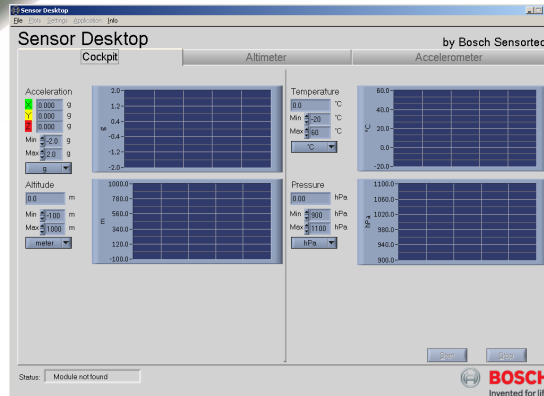
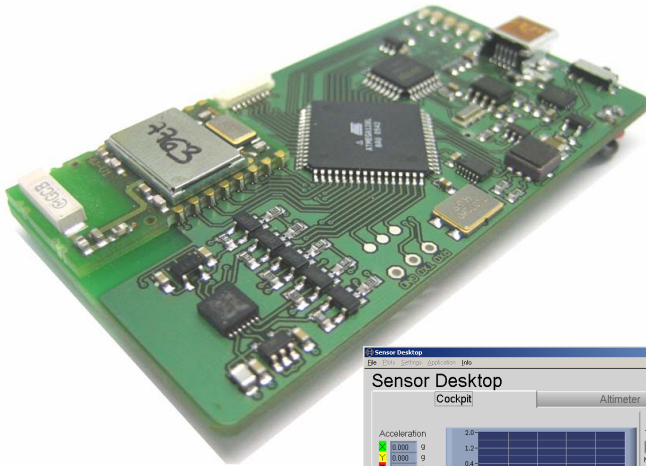
Tribox380



- Demonstrator for SMB380
- Status: available in 02/07
- USB connectivity
- PC Suite: Evaluation Desktop
- Features:
 - Read-out and display acceleration values
 - Data logging
 - Configure and display of on-chip interrupt function
 - Self Wake Up function
 - Measure current consumption
 - Firmware upgrade via USB

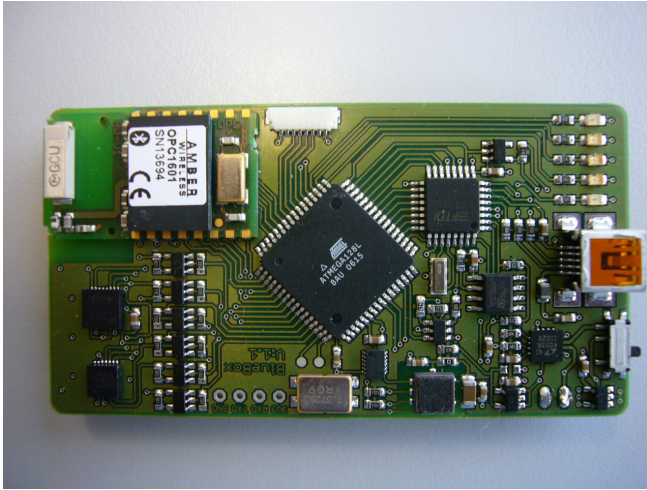


Bluebox V1.01

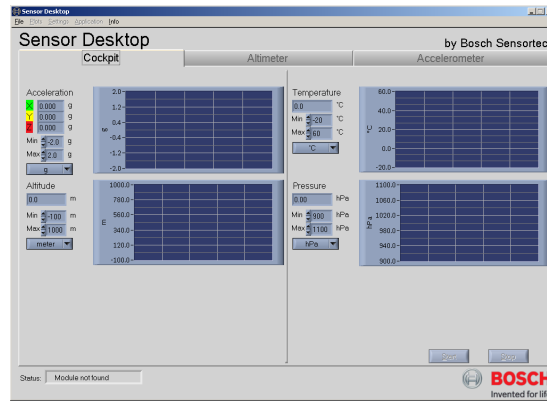


- ➔ Demonstrator for SMB365 and SMD500
- ➔ Status: available
- ➔ USB and Bluetooth connectivity
- ➔ PC Suite: Sensor Desktop
- ➔ Features:
 - SMB365
 - Read-out and display acceleration values
 - Data logging
 - Configure and display of on-chip interrupt function
 - SMD500
 - Read-out and display pressure and temperature
 - Convert into altitude information
 - Data logging

Bluebox V1.1



- ➔ Demonstrator for SMB365, SMD500 and SMG300
- ➔ Status: available
- ➔ USB and Bluetooth connectivity
- ➔ PC Suite: Sensor Desktop
- ➔ Features:
 - SMB365
 - Read-out and display acceleration values
 - Data logging
 - Configure and display of on-chip interrupt function
 - SMD500
 - Read-out and display pressure and temperature
 - Convert into altitude information
 - Data logging
 - SMG300
 - Read-out and display yaw-rate
 - Data logging



Evaluation Systems



Scope of Evaluation Board

- Platform for detailed sensor evaluation
- Development purposes
- Extensive measurements on power supply and all sensor interfaces
- Interfacing to existing customer platforms



Application Board Overview

Evaluation Board Features



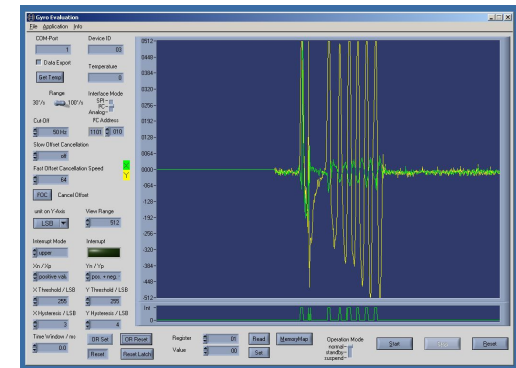
Access to all pins

Engineering
Playground

Socket for
Shuttle Board

SD Card slot

Evaluation Desktop



Bosch Sensortec

Internal | BST/ENG | 1/9/2007 | © Bosch Sensortec GmbH reserves all rights even in the event of industrial property rights. We reserve all rights of disposal such as copying and passing on to third parties.



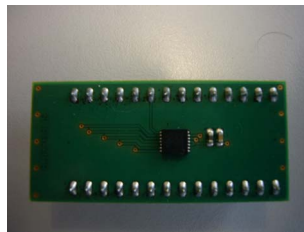
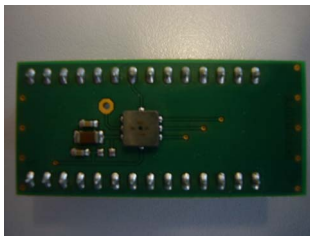
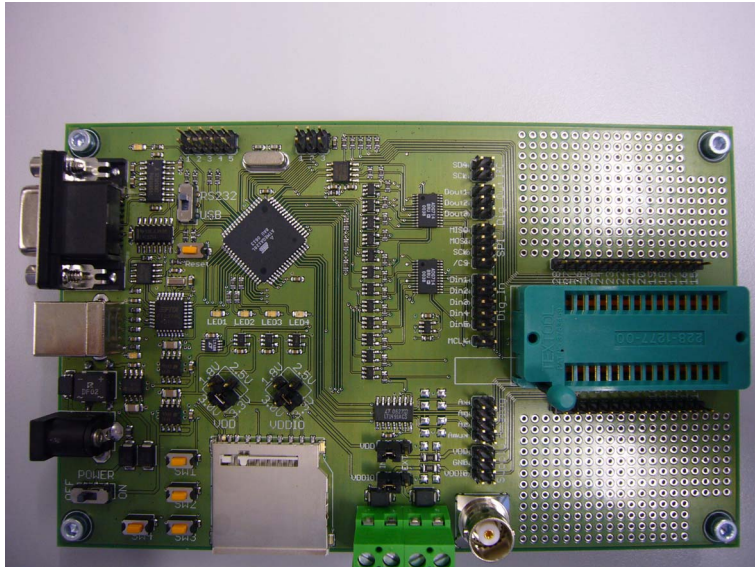
BOSCH

Evaluation Board Feature List

- USB and Serial Port connectivity
- USB powered, wall wart or external power supply
- Internal or external clock source
- Access to all supply, communication buses and digital / analogue pins
- Engineering Playground for external components and connectors
- Buttons and LEDs for interactive control
- SD Card Slot for stand alone operation
- PC Software Evaluation Desktop allows detailed access to all sensor resources
- Evaluation Board firmware can be upgraded via USB or Serial Port



Evaluation Board and Shuttle Boards



→ Status

- Available:
 - Evaluation Board
 - Shuttle Board SMB380
 - Shuttle Board SMG300
- Planned
 - Shuttle Board SMB363 (02/07)
 - Shuttle Board SMB365 (02/07)
 - Shuttle Board SMD500 (02/07)
 - Shuttle Board Module SMB380 and SMG300 (t.b.d.)
 - Shuttle Board Module SMB380 and SMD500 (t.b.d.)