







## OPERATING CHARACTERISTICS<sup>1</sup><sup>5</sup>

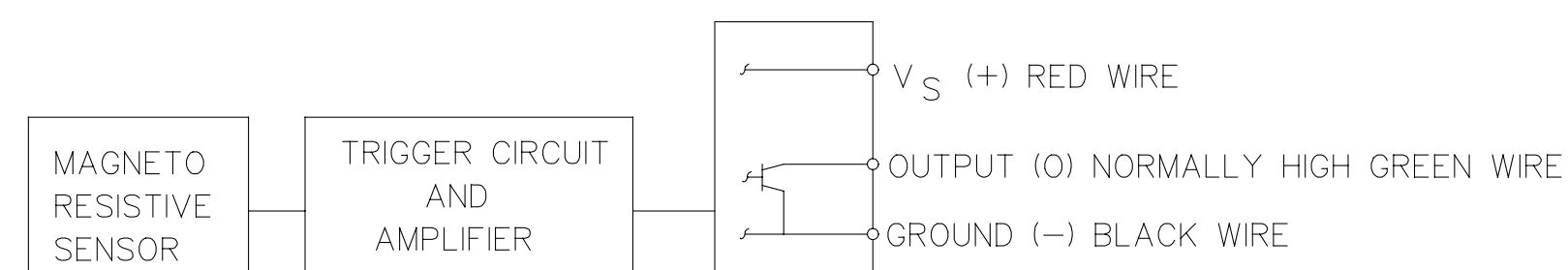
OPERATE MAX	25 GAUSS
RELEASE MIN	5 GAUSS
DIFF MIN	2 GAUSS
(TEMP RANGE -20°C TO 85°C)	

## ABSOLUTE MAXIMUM RATINGS

SUPPLY VOLTAGE (VS) 	6 VDC TO 24 VDC
VOLTAGE EXTERNALLY APPLIED TO OUTPUT	+24 VOLTS DC MAX WITH SWITCH IN "OFF" CONDITION ONLY -0.5 VOLTS MAX WITH SWITCH IN "OFF" OR "ON" CONDITION
OUTPUT CURRENT	20 mA
TEMPERATURE OPERATE AND STORAGE	-40°C TO 85°C
MAGNETIC FLUX	NO LIMIT, THE CIRCUIT CANNOT BE DAMAGED BY MAGNETIC OVERDRIVE

## ELECTRICAL CHARACTERISTICS

	MIN	TYP	MAX	REMARKS
SUPPLY CURRENT 		2.5 mA	13.5 mA	V <sub>S</sub> = 6-24 VOLTS 
OUTPUT VOLTAGE  (OPERATED)		0.25 V	0.4 V	SINKING 20 mA MAX PER OUTPUT
OUTPUT LEAKAGE  CURRENT (RELEASED)			10 $\mu$ A	LEAKAGE INTO SWITCH OUTPUT
OUTPUT SWITCHING TIME				
RISE TIME 		0.2 $\mu$ SEC	1.5 $\mu$ SEC	10% TO 90%
FALL TIME		0.1 $\mu$ SEC	0.5 $\mu$ SEC	90% TO 10%



BLOCK DIAGRAM SHOWING CURRENT SINKING OUTPUTS

## NOTES

- ① FLUX ENTERING THE SOUTH POLE OR THE NORTH POLE OF THE MAGNET WILL OPERATE THE SENSOR WHEN MAGNET IS POSITIONED AS SHOWN IN FIGURE 2. THIS ASSUMES THE CONVENTION THAT THE DIRECTION OF THE EXTERNAL FLUX OF A MAGNET IS FROM THE NORTH TO THE SOUTH POLE OF THE MAGNET.
  - ② LEADWIRES (INDIVIDUAL WIRES) ARE 24 GAGE STRANDED WITH XLPE INSULATION
  - ③ DATE CODE LOCATED IN THIS AREA
  - ④ AT  $24 \pm 2^{\circ}\text{C}$
  - ⑤ AT SUPPLY VOLTAGE OF 6 TO 24 VOLTS AND FULL TEMPERATURE RANGE
  - ⑥ CATALOG LISTING LOCATED IN THIS AREA
  - ⑦  $V_s$  IS THE UNREGULATED SUPPLY VOLTAGE
  - ⑧ TORQUE ON PLASTIC NUTS MUST NOT EXCEED 12 INCH POUNDS
- 9 – THE MAGNETIC CHARACTERISTICS OF THE SWITCH MAY BE AFFECTED BY STRAY MAGNETIC FIELDS

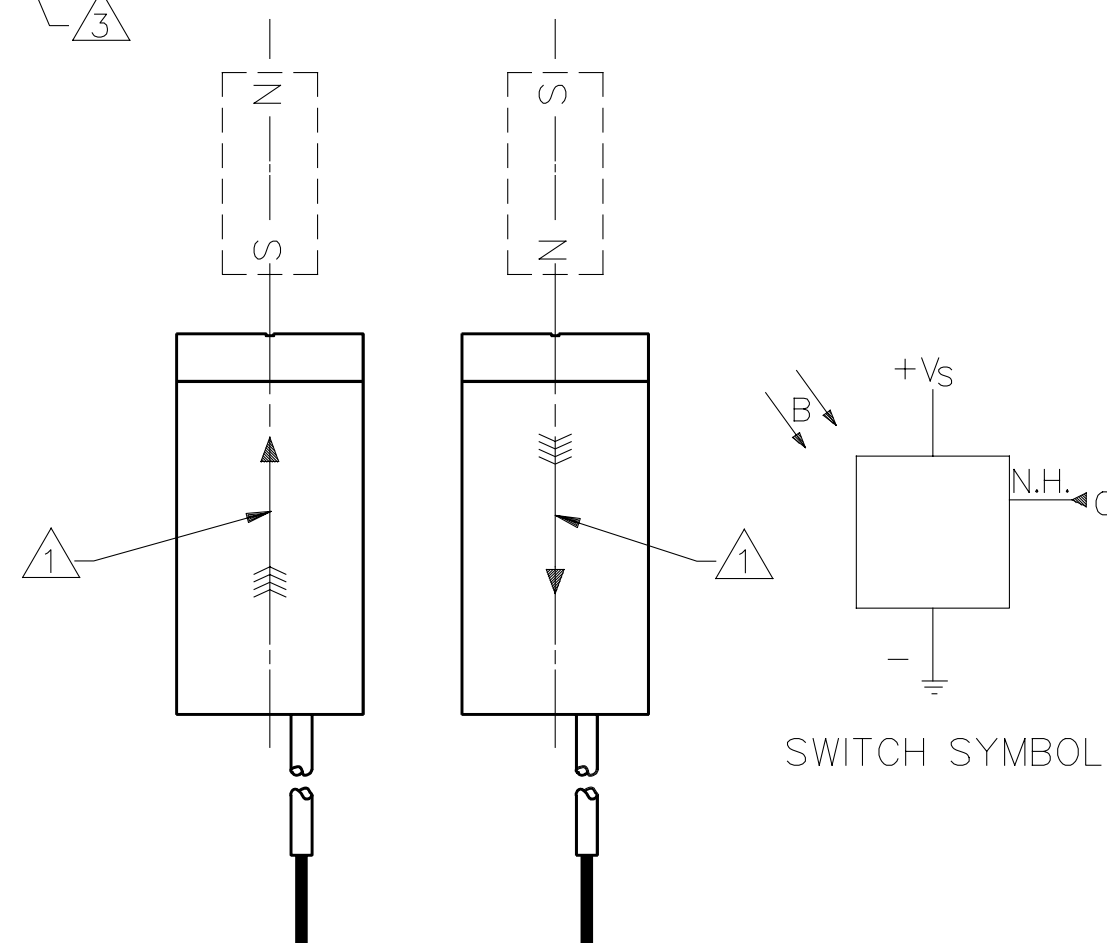


FIG. 2  
OPERATE

MASTER REDUCED  
ANSI Y14.5M-1982 APPLIES

THIS DRAWING COVERS A PROPRIETARY ITEM AND IS THE PROPERTY OF MICRO SWITCH, A DIVISION OF HONEYWELL. THIS DRAWING IS NOT TO BE COPIED OR USED WITHOUT THE APPROVAL OF MICRO SWITCH.

**MICRO SWITCH**  
a Honeywell Division

FED. MFG. CODE 91929

MAGNETICALLY  
OPERATED CYLINDRICAL  
HALL SWITCH

CATALOG LISTING  
**SR4P2-A1**

SR4P2-A1

THIRD ANGLE PROJECTION

DO NOT SCALE PRINT

UNLESS OTHERWISE SPECIFIED TOLERANCES ARE		
ONE PLACE	(.0)	± .030
TWO PLACES	(.00)	± .015
THREE PLACES	(.000)	± .005
ANGLES		±

WEIGHT

SR4P2-A1

D R A W I N G   N U M B E R

4	ISSUE	M
---	-------	---

## REVISIONS

A	C075307
J A F	
25 MAY 93	

23 MAY 59	
B	C081515A
GJW	
11 DEC 05	

11 DEC 95	
C	C082772A
DLT	

26 APR 96	








AD

RAWN

DDM  
DF

1